

New

Generation
Mardomes



mardometrade
Dome Rooflights



Mardome Trade is the standard specification dome in the newly redesigned next generation Mardomes. Providing excellent insulation, triple skin Mardome Trade rooflights achieve a centre pane U-value of $1.8 \text{ W/m}^2\text{K}$ and a U_d -value which ranges from $1.25 \text{ W/m}^2\text{K}$ for a $600 \times 600 \text{ mm}$ dome to $1.51 \text{ W/m}^2\text{K}$ for a $200 \times 2400 \text{ mm}$ dome. Higher performance glazing options can further reduce the U_d -value to as low as $0.95 \text{ W/m}^2\text{K}$.

- New contemporary low rise profile
- Saves energy with options to reduce the centre pane U-value to $1.8 \text{ W/m}^2\text{K}$ and a U_d -value to as low as $0.95 \text{ W/m}^2\text{K}$
- Unique glazing cassette in triple and quad skin domes, minimises the risk of condensation
- All power components are hidden for a streamlined lightwell
- Extensive options to satisfy requirements for acoustics, ventilation and light transmission
- For ease of installation the tapered kerb foot does not require timber fillets and an integral membrane clamp holds the roofing membrane or felt in place



Centre pane U-value is a measure of the thermal efficiency of the glazing type.

* U_d -value is thermal efficiency of the developed rooflight unit (calculated in accordance with NARM Technical Document NTD2 (2009)).

mardome
Dome Rooflights

Mardome Trade Configuration

Offering the widest possible flexibility, Mardome Trade rooflights can be individually configured to the required size, in a range of glazing, ventilation and opening options, to satisfy your budget and application.

Size and Shape

Available in standard sizes from 600x600mm up to 1800x1800mm with a choice of low rise dome or low rise pyramid shaped glazing units.

Low Rise Dome

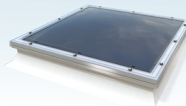
Low Rise Pyramid

Glazing

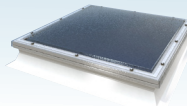
Glazed with Marlon FSX Longlife polycarbonate and available in single, double, triple and quad skin units depending on the level of thermal insulation required.

Additional glazing options include:

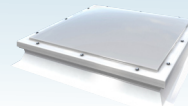
- Double glazed glass inner glazing (standard or argon filled) - improved U_g-values, acoustics and aesthetics
- 25mm structured polycarbonate inner glazing - improved thermal performance



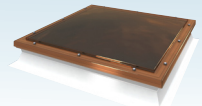
Clear
High Visibility & Light Transmission



Textured
Privacy & Light Transmission



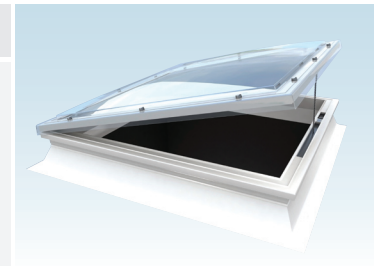
Opal
Privacy, Diffused Light & Solar Control



Bronze
Solar Control

Opening Options

- Manual opening with extension pole
- Powered opening
- Powered opening with RF remote control handset
- Powered opening with RF remote control handset and rain sensor
- SV30 Smoke clearance / AOV unit opens to a nominal 30° (requires 24v system)
- SV90 Smoke clearance / AOV unit opens to a nominal 90° (requires 24v system)
- Access Hatch – Lockable from the inside, this gas strut assisted opening unit can be used to gain access to the roof, used in conjunction with a suitable ladder/other means of access (not supplied)



Ventilation

- Trickle Vents (Manual) - Standard Spec
- Automatic (Humidity Controlled) - Superior Spec

Direct Fix Kerb

Available with a direct fix kerb option for installation directly onto builders upstands.

Accessories

- Kerb adaptor allows standard sized domes to be fitted on non-standard size upstands
- Timber kit for application of mastic asphalt roofing systems
- Security grille
- Telescopic opening poles (to a maximum extension of 3m)
- Mardome GRP soaker available for metal clad roof applications

Acoustics Pack

The Acoustics Pack should be specified where a reduction in rain or external noise transmission is required (not available with ventilated or opening domes).

Options

Standard Sizes mm	Shape	Trickle Vents (Manual) Ventilation	Automatic (Humidity Controlled) Ventilation	Manual Opening	Powered Opening	R/C Powered Opening	R/C Powered Opening with Rain Sensor	SV30	SV90	Access Hatch
600x600	D,P	Y	Y	Y	Y	Y	Y	N	N	N
600x900	D,P	Y	Y	Y	Y	Y	Y	Y	N	N
600x1500	D,P	Y	Y	Y	Y	Y	Y	Y	N	N
750x750	D,P	Y	Y	Y	Y	Y	Y	Y	Y	N
750x900	D,P	Y	Y	Y	Y	Y	Y	Y	Y	N
900x900	D,P	Y	Y	Y	Y	Y	Y	Y	Y	Y
900x1800	D	Y	Y	Y	Y	Y	Y	Y	Y	Y
1050x1050	D,P	Y	Y	Y	Y	Y	Y	Y	Y	Y
1050x1500	D,P	Y	Y	Y	Y	Y	Y	Y	Y	Y
1200x600	D,P	Y	Y	Y	Y	Y	Y	Y	N	N
1200x900	D,P	Y	Y	Y	Y	Y	Y	Y	Y	Y
1200x1200	D,P	Y	Y	Y	Y	Y	Y	Y	Y	Y
1200x1500	D,P	Y	Y	Y	Y	Y	Y	Y	N	N
1200x1800	D	Y	Y	Y	Y	Y	Y	Y	N	N
1200x2400	D	Y	Y	N	N	N	N	N	N	N
1350x1350	D,P	Y	Y	N	N	N	N	N	N	N
1500x1500	D,P	Y	Y	N	N	N	N	N	N	N
1800x1800	D	Y	Y	N	N	N	N	N	N	N

Note: All sizes are available as fixed vented or non-vented units. D: Dome P: Pyramid

Brett Martin Daylight Systems Ltd

Tel: +44 (0) 24 7660 2022 Email: daylight@brettmartin.com

www.daylightsystems.com